

AIR CONDITIONING

Compact Cassette - Economy Series



AUXG09KVLA / AOYG09KATA
 AUXG12KVLA / AOYG12KATA
 AUXG14KVLA / AOYG14KATA
 AUXG18KVLA / AOYG18KATA
 AUXG22KVLA / AOYG22KATA
 AUXG24KVLA / AOYG24KATA



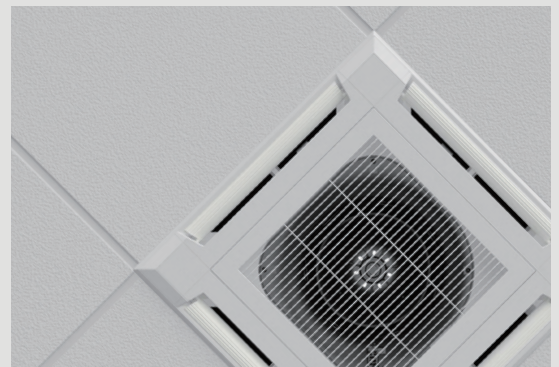
Point High efficiency and compact panel design

Compact and stylish panel design fits the grid type ceiling. It is a linear design suitable for grid shape of 620 mm × 620 mm grid ceiling.

Rank
Cooling
A++
Heating
A+

SEER
6.70
(09 model)

SCOP
4.40
(09/14 models)

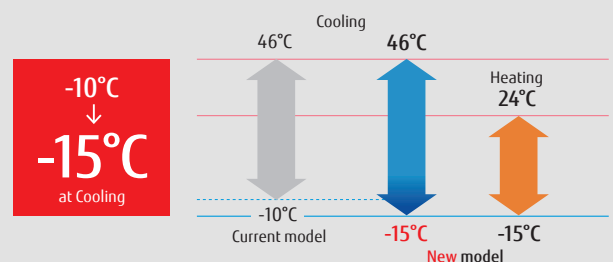


Point Flexible installation

It is suitable for ceiling of grid type and it has high degree of freedom of installation and it can be installed beside lighting and ventilation opening.



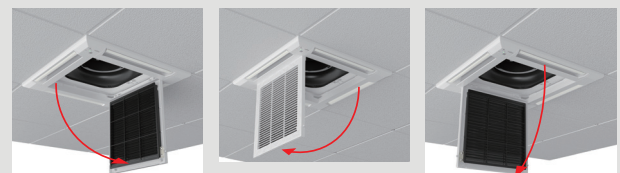
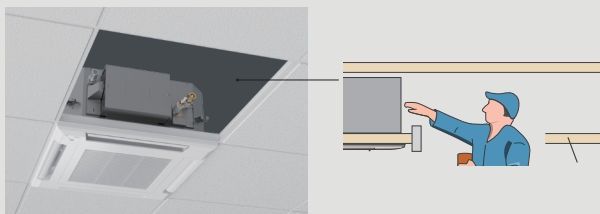
Point Low ambient operation



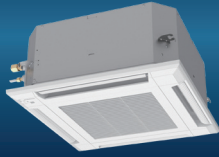
Point Easy maintenance

Maintenance is easier by removing the ceiling panel next to the grill, maintenance can be done, and new installation of inspection hole is unnecessary, so construction costs can be suppressed.

The air inlet grill can be installed in various directions, so maintenance is easy.



**Model: AUXG09KVLV / AUXG12KVLV / AUXG14KVLV / AUXG18KVLV / AUXG22KVLV / AUXG24KVLV
AOYG09KATA / AOYG12KATA / AOYG14KATA / AOYG18KATA / AOYG22KATA / AOYG24KATA**



AOYG09/12/14KATA

AOYG18/22KATA

AOYG24KATA

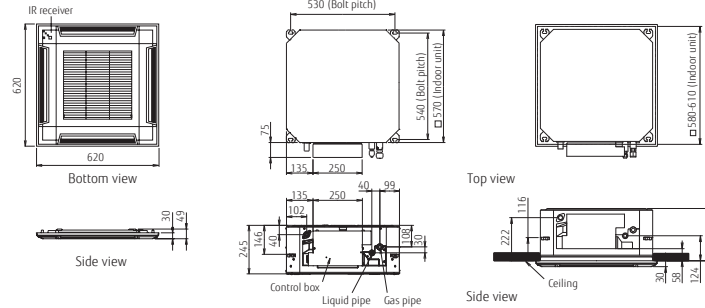
Optional parts

Wireless Remote Controller:	UTY-LNTY
Wired Remote Controller:	UTY-RNRYZ3, UTY-RVNYM,
Simple Remote Controller:	UTY-RSRY, UTY-RSNYM
Wireless LAN Interface:	UTY-TFSXZ1
Cassette Grille:	UTY-UFYF-W
Fresh Air Intake Kit:	UTZ-VXAA
External Input and Output PCB (with box):	UTY-XCSX+UTZ-GXRA
External Connect Kit:	UTY-XWZXZG

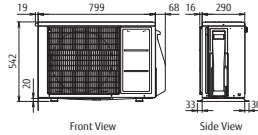
Dimensions

Indoor unit : AUXG09/12/14/18/22/24KVLV

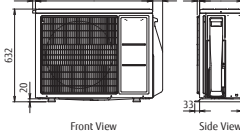
(Unit : mm)



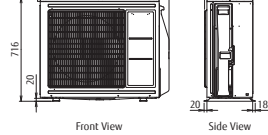
Outdoor unit : AOYG09/12/14KATA



AOYG18/22KATA



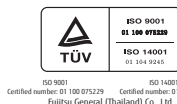
AOYG24KATA



Model No.	Indoor unit		AUXG09KVLV	AUXG12KVLV	AUXG14KVLV	AUXG18KVLV	AUXG22KVLV	AUXG24KVLV
	Outdoor unit		AOYG09KATA	AOYG12KATA	AOYG14KATA	AOYG18KATA	AOYG22KATA	AOYG24KATA
Power Source			Single phase, ~230V, 50Hz					
Capacity	Cooling	kW	2.5(0.9-2.7)	3.5(0.9-3.7)	4.3(0.9-4.5)	5.2(0.9-5.4)	6.0(0.9-6.3)	6.8(0.9-7.4)
	Heating		3.2(0.9-3.9)	4.1(0.9-4.4)	5.0(0.9-5.3)	6.0(0.9-6.3)	7.0(0.9-7.4)	7.5(0.9-8.6)
UK Total/sensible cooling			2.37 / 1.92	3.27 / 2.56	4.10 / 3.12	4.80 / 3.42	5.65 / 3.90	6.63 / 4.74
Input Power	Cooling/Heating	kW	0.68/0.88	1.09/1.17	1.37/1.42	1.69/1.72	1.95/2.00	2.26/2.08
EER	Cooling	W/W	3.68	3.21	3.14	3.08	3.08	3.01
	Heating		3.64	3.50	3.52	3.49	3.50	3.61
Pdesign	Cooling/Heating(-10°C)	kW	2.5/2.3	3.5/2.8	4.3/3.2	5.2/3.8	6.0/4.4	6.8/5.4
	SEER	Cooling	6.2	6.1	6.1	6.1	6.1	5.9
SCOP	Heating	W/W	4.0	4.0	4.0	3.9	3.9	3.8
	Energy Efficiency Class	Cooling	A++	A++	A++	A++	A++	A+
Heating		A+	A+	A+	A	A	A	
Annual Energy Consumption	Cooling	kWh/a	141	201	247	298	344	403
	Heating		804	979	1,120	1,362	1,578	1,988
Moisture Removal			0.6	1.2	1.5	2.2	2.6	2.7
Sound Pressure Level	Indoor (Cooling)	H/M/L/Q	33/31/29/27	37/34/30/27	38/34/30/27	38/34/30/26	44/42/36/30	49/44/36/30
	Indoor (Heating)		H/M/L/Q	34/32/29/27	37/34/31/29	43/38/34/30	43/38/34/30	45/43/40/33
Sound Power Level	Outdoor(Cooling/Heating)	High	47/48	49/50	50/51	51/52	52/53	54/55
	Indoor(Cooling/Heating)		High	46/47	49/49	50/55	50/55	56/57
Airflow Rate	Outdoor(Cooling/Heating)	High	60/60	62/62	63/63	63/64	64/65	66/67
	Indoor / Outdoor (Cooling)		High	540/1,610	600/1,630	680/1,670	680/1,710	830/2,240
Net Dimensions H x W x D	Indoor	mm		245x570x570	245x570x570	245x570x570	245x570x570	245x570x570
	Outdoor		541x663x290	541x663x290	542x799x290	542x799x290	632x799x290	632x799x290
Weight	Indoor	kg(lbs)	15(33)	15(33)	15(33)	15(33)	16(35)	16(35)
	Outdoor		23(51)	25(55)	32(71)	33(73)	36(79)	38(84)
Remote Controller Type (NOT Supplied With Unit)			NO CONTROLLER SUPPLIED WITH THESE UNITS PLEASE ORDER SEPARATELY					
Interconnecting Cable (Suggested cable size 1.5mm)			3 Core + Earth					
Suggested MCB Size	Amp		10	10	13	13	16	20
Max. Operating Current	Cooling/Heating	A	6.9/6.9	7.7/7.7	9.2/9.2	10.1/10.1	11.6/11.6	12.6/12.6
Power Supply To			Outdoor					
Connection Pipe Diameter (Gas / Liquid)	Inch		3/8 & 1/4	3/8 & 1/4	3/8 & 1/4	1/2 & 1/4	1/2 & 1/4	1/2 & 1/4
Max Pipe Length (Pre-Charge)	m		15 (15)	15 (15)	20 (15)	20 (15)	25 (15)	25(20)
Max Height Difference	m		15	15	15	15	20	20
Operation Range	Cooling	°CDB	-10 to 46	-10 to 46	-10 to 46	-10 to 46	-10 to 46	-10 to 46
	Heating		-15 to 24	-15 to 24	-15 to 24	-15 to 24	-15 to 24	-15 to 24
Refrigerant	Type		R32(675)	R32(675)	R32(675)	R32(675)	R32(675)	R32(675)
	Charge	g	600	700	850	900	1100	1250
	Additional Charge	g/m	-	-	20	20	20	20
Cassette Grille	Model name		UTG-UFYF-W	UTG-UFYF-W	UTG-UFYF-W	UTG-UFYF-W	UTG-UFYF-W	UTG-UFYF-W
	Dimensions (H x W x D)	mm	49x620x620	49x620x620	49x620x620	49x620x620	49x620x620	49x620x620
	Weight	kg(lbs)	2.3 (5)	2.3 (5)	2.3 (5)	2.3 (5)	2.3 (5)	2.3 (5)

*Specifications and design are subject to change without notice for further improvement.
*Actual products' colours may be different from the colours shown in this printed material.

Distributed by :



FUJITSU GENERAL AIR CONDITIONING (UK) LTD

Unit 150 Centennial Park, Centennial Avenue, Elstree, Herts. WD6 3SG

www.fujitsu-general.com/uk

Tel: +44 (0)208 731 3450 Fax: +44 (0)208 731 3451

Copyright© 2018 Fujitsu General Limited. All rights reserved. 3EFNP29-1812E